

DEC 11 2020
Kaen Brom

Index No. E-9

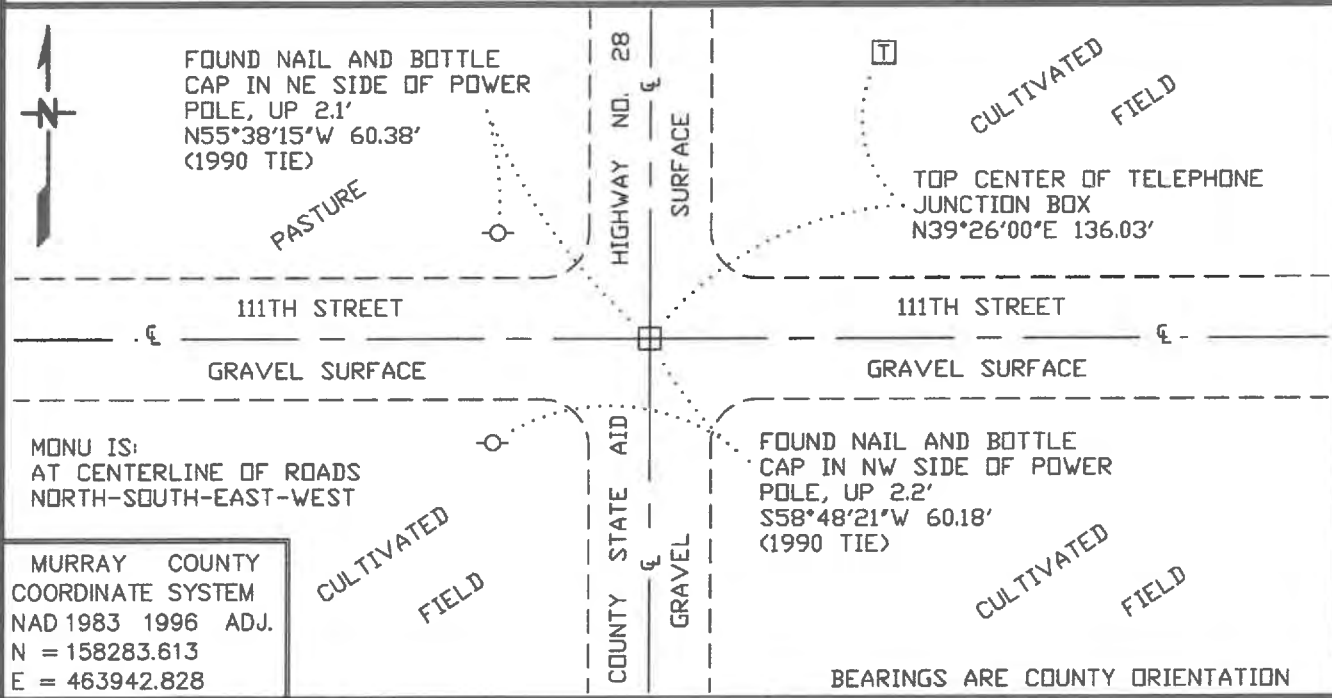
CERTIFICATE OF LOCATION OF GOVERNMENT CORNER

NORTHEAST Corner of Section 8, Township 106 N, Range 42 W

5TH Principal Meridian, State of Minnesota, County of MURRAY

At the corner location shown on the sketch:

- On 9/28/2020 found a 11" X 12" X 22" GREY STONE, DOWN 0.5'
DATE
- left monument as found, lowered monument, removed monument (explain)
- On 9/28/2020 Placed a 3/4" DIAMETER X 22" LONG IRON PIPE ON NORTHEAST
DATE
SIDE OF GREY STONE. IT'S TOP BEING 0.4' BELOW THE TOP OF THE STONE.



Statement of evidence for this corner location is on back of this page.

OCT 2020
WMA00026

I hereby certify that this plan, specification, or report was prepared by me or under my direct supervision and that I am a duly Licensed Land Surveyor under the laws of the State of Minnesota.

SIGNATURE Bruce W. Shepperd DATE 12/09/2020 License Number 17003
BRUCE W. SHEPPERD

The DNR Division of Lands and Minerals contacted the following for survey information:

Website - mngeo.state.mn.us for GLO plat and field notes

Website - murray-countymn.com for section and quarter section corner information

Website - mndot.maps.arcgis for Railroad and Highway Right of Way Maps

Murray County Recorder's Office

Zieske Land Surveying Inc. of Windom

Madsen Land Surveying Inc. of Fairmont

Bueltel-Moseng Land Surveying Inc. of Marshall

MnDOT Office in Willmar

- 1866 U.S. General Land Office notes, obtained from mngeo.state.mn.us, show the corner marked with a post in a mound.
- 1902 June 25, a Surveyor's Record Book page that shows Section 4, T106N, R42W, obtained from murray-countymn.com, by J.W. Woolstencraft, shows an 11 x 12 x 22 grey stone at the corner but does not indicate if it was found or set. The corner is shown:
2622 feet from the south quarter corner of Section 4/north quarter corner of Section 9
The corner is noted as a government corner.
- 1908 Leeds Township Ownership Plats, obtained from the County Recorder's Office, show ownership
1926 lines north, south, east and west in the area of the corner. The area of the corner is also shown to be at the intersection of roads north, south, east and west.
- No A Surveyor's Record Book page that shows Section 8, T106N, R42W, obtained from
Date murray-countymn.com, shows a stone at the corner but does not indicate if it was found or set.
The following ties are shown to the corner:
R.P. tack in northeast corner fence post, 47.5 feet
R.P. tack in northwest corner fence post, 41.8 feet
- 1990 February, a Certificate of Survey in the NW $\frac{1}{4}$ NE $\frac{1}{4}$ of Section 8 and field notes for it, obtained from Madsen Land Surveying Inc., show the following at the corner:
a) a pointed stone (10" deep) with a 5/8" x 6" rebar laying over the stone
b) set a 3/4" O.D. x 22" iron pipe on N.E. side of stone with top bent over the stone (4" deep)
The following ties are shown to the corner:
bottle cap in power pole, southwest, 60.70 feet
bottle cap in power pole, northwest, 60.45 feet
bottle cap in yield sign post, northeast, 45.25 feet
- 2015 January 21, a Certificate of Location of Government Corner for the north quarter corner of Section 9, obtained from murray-countymn.com, and signed by Jerry Johnson, PS 50343, states the following about the north quarter corner of Section 9:
set a 5/8 inch iron with seal number 50343 midway and on line as shown on 1902 survey

Northeast Corner of Section 8, Township 106 North, Range 42 West
Page 2 of 2

2019 December 19, a Certificate of Location of Government Corner for the east quarter corner of Section 8, obtained from the County Recorder's Office, and signed by Daniel L. Bueltel, PLS 43844, shows that a $\frac{3}{4}$ inch pipe was found at the northeast corner of Section 8. A distance of 2645.44 feet is shown between the east quarter corner of Section 8 and the northeast corner of Section 8. The $\frac{3}{4}$ inch pipe is shown to have the following NAD 1983 (1996 Adjustment) Murray County coordinate of a found monument at the corner prior to the installation

Northing = 158283.950

Easting = 463942.864

The Certificate of Location of Government Corner can also be found on murray-countymn.com.

2020 September, Assistant Murray County Highway Engineer and Bruce W. Shepperd corresponded via email about this corner and the following information was received:

a) A tile line has been constructed under the road surface in the area of the corner and it's about 3 to 4 feet deep and its end is 2 feet north and 2 feet east of the corner.

b) The following NAD 1983 (1996 Adjustment) coordinate of a found $\frac{5}{8}$ inch iron stake at the corner prior to the installation of the tile line:

Northing = 158283.847

Easting = 463942.704

2020 September 28, the DNR Division of Lands and Minerals roved to the area of the corner with RTK GPS and found a $\frac{3}{4}$ inch diameter by 22 inch long iron pipe, down 0.8 of a foot at the coordinates per the above December 19, 2019, information from Daniel L. Bueltel, PLS 43844. The area next to the found iron pipe was excavated by hand and an 11 inch by 12 inch by 22 inch grey stone was found, down 0.5 of a foot, standing upright, which agrees with the 1902 survey by J.W. Woolstencraft.

The found stone was reset in the same location as found, down 0.5 of a foot, and the found $\frac{3}{4}$ inch by 22 inch long iron pipe was set on its northeast side, 0.4 of a foot below the top of the stone. A search was made for the record ties and found two of them as shown on the sketch of reference ties.

Analysis of the above information led the DNR Division of Lands and Minerals to conclude that the found 11 inch by 12 inch by 22 inch grey stone marks the original location of the corner as noted by J.W. Woolstencraft in 1902.